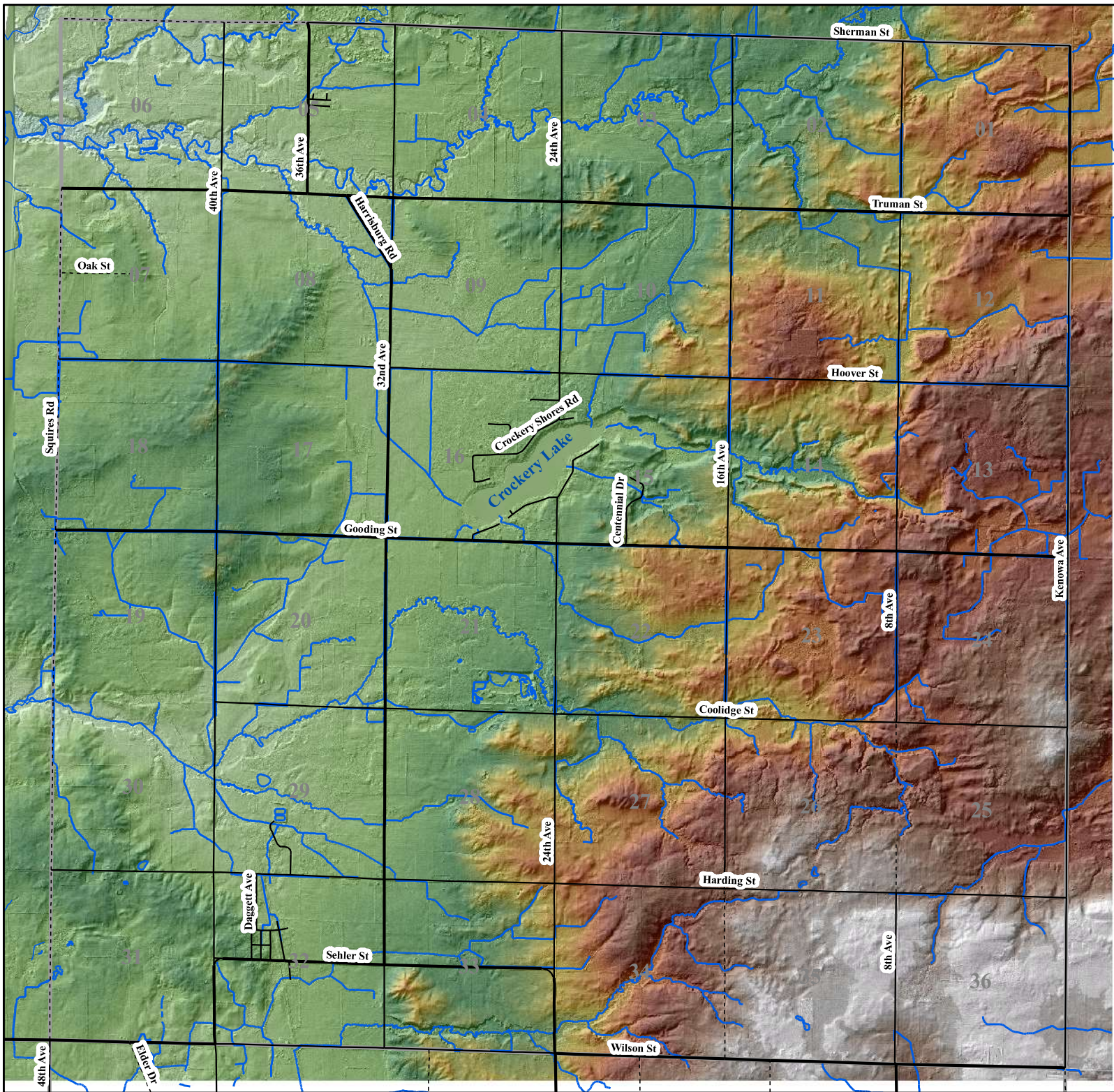


Map 1 Chester Township DEM Elevation

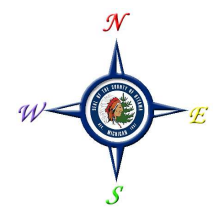


Legend

Chester Township DEM

Elevation Feet

- 957.51
- 927.121
- 896.733
- 866.344
- 835.955
- 805.566
- 775.178
- 744.789
- 714.4
- 684.012
- 653.623



© Copyright 2003, Ottawa County
 This map has been developed through the
 Ottawa County Geographic Information System
 and as such is the property of Ottawa County.
 Any duplication is restricted under the Copyright
 laws, the Ottawa County Policy on Enhanced
 Access to Public Records and Act 462 of the
 Public Acts of 1996, as amended.

GIS Department
 12220 Fillmore Street, Suite 320
 West Olive, Michigan 49460
 Phone (616)-738-4600
 Fax (616)-738-4610
 www.gis.mottawa.org

Photography date: April 2008

Source: County of Ottawa MI.
 GIS 2004 LIDAR